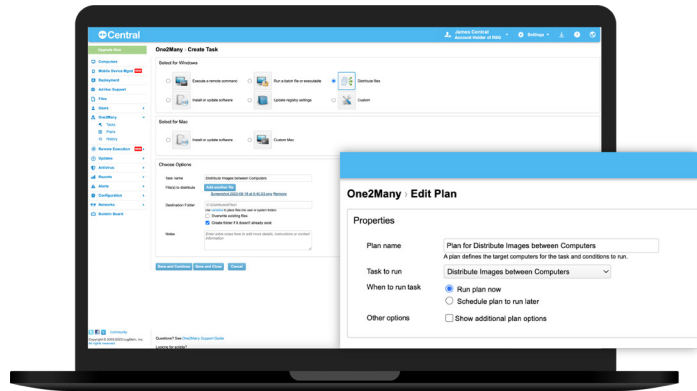


Automation Module

Stay on top of issues before they occur by bringing your productivity and security posture to the next level.

Central offers the flexibility and freedom to choose what modules work best for you. Transform your business with our powerful Automation, Security, and Insight add-on modules.



Module Includes:

Feature	Benefit
<p>One2Many Automated Task Management Install or update software, distribute files, run scripts and automate manual tasks across multiple computers simultaneously.</p>	<ul style="list-style-type: none"> • Deploy and automate routine IT tasks to increase productivity, optimize resource allocation, and maximize security • A mass deployment tool that offers automation, machine maintenance, and task delivery • Take back your time and be an IT hero with automated task management capabilities • Automate remote commands or update registry settings and get back to the bigger projects that matter most • Mass or individually deploy to destination folders on select endpoints. • Utilize JavaScript to perform comprehensive Windows update on remote computers • Run tasks immediately or per a schedule
<p>Advanced Scripting Powerful command-line scripting lets you install software or push files to multiple devices at the same time.</p>	<ul style="list-style-type: none"> • Run PowerShell, a powerful command-line shell and scripting language, across multiple computers simultaneously. • Save time, eliminate repetitive tasks, and reduce IT cost by running CMD or PowerShell commands across multiple computers at the same time
<p>Proactive Alerts Set up, monitor, and take action on alerts to address potential performance and security holes before they occur.</p>	<ul style="list-style-type: none"> • Take your IT support from reactive to proactive • Receive critical system alerts in real-time and address potential issues before they occur • Monitor computer health and take action on alerts to resolve concerns before they become problems • Monitor any software/hardware changes including hard drive errors and stay ahead of risks • Set up alerts for performance (CPU), maintenance (folder size, file size), and general supports (if a user installed software, missing hardware)
<p>Self-Healing Alerts Combine proactive alerts with One2Many automated task management to enable common problems to solve themselves.</p>	<ul style="list-style-type: none"> • Combine proactive alerts with One2Many to prevent the need to address the same issue more than once • Add solutions ahead of time, allowing the alert to solve the problem without any human intervention • Actively protect your business by customizing alerts on system and endpoint status • Identify and close security gaps in real time